

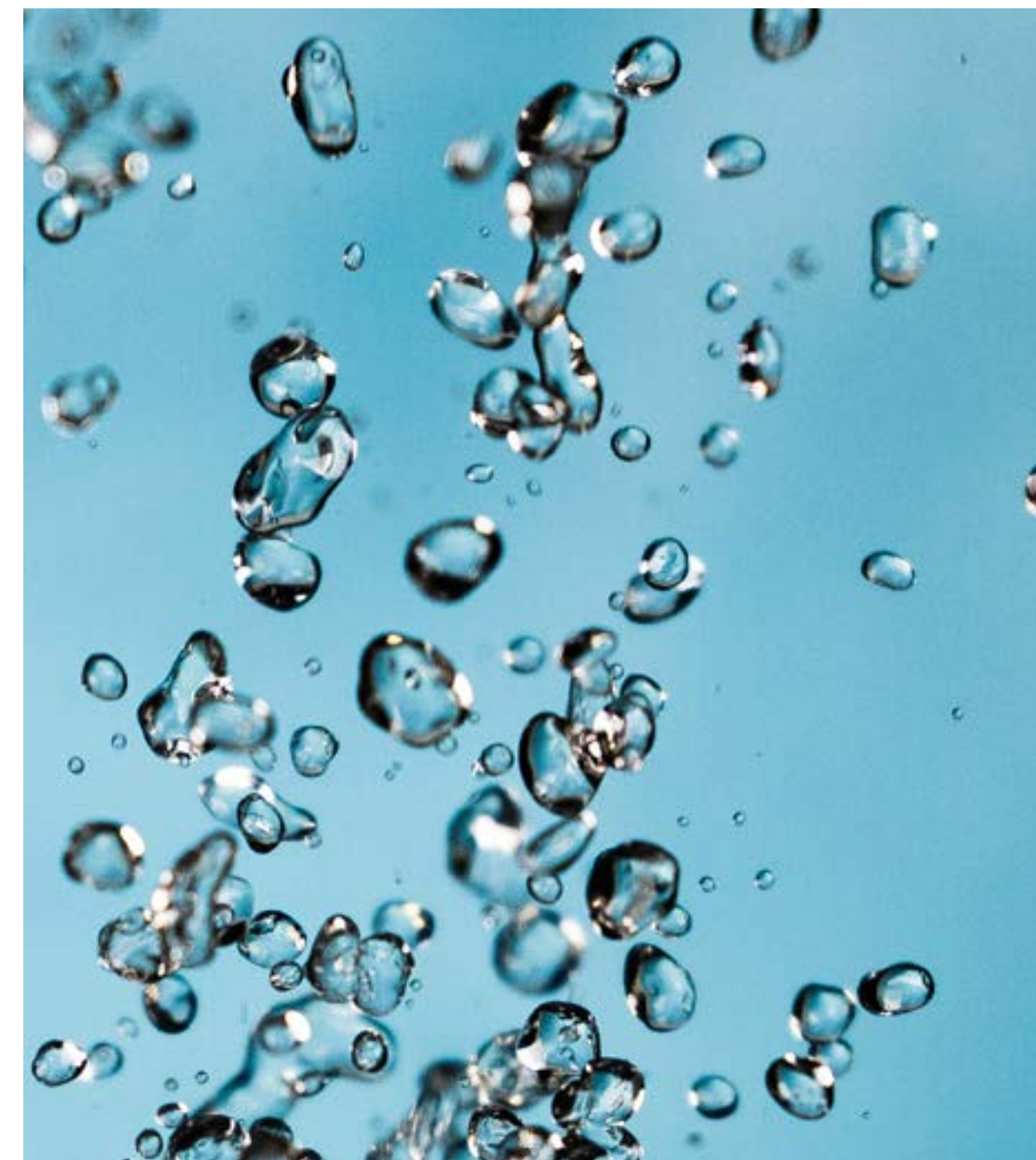
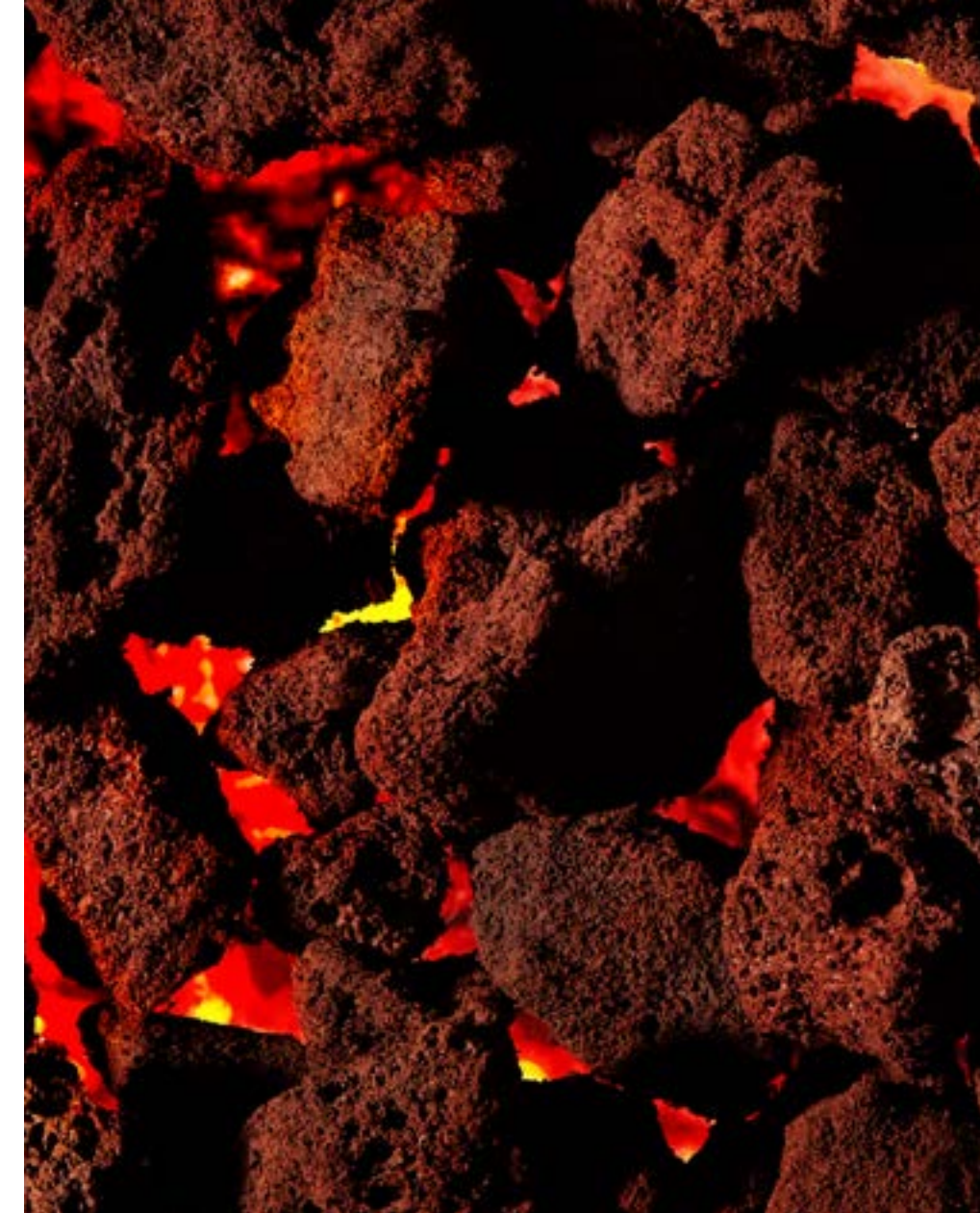


STYLERICH

MIXED ELEMENTS
ROOTED IN *Style*

TREND GUIDE SPRING/SUMMER 2024

Step into a world where style is grounded in the elements. From earth and water, to fire and air explore styles with a **natural flair**. Brilliant and bold. Simple and understated. Jewelry that **suits every style**, naturally. For those who dare to dazzle: **Radiant staples** that'll unleash their inner wild. Jewelry that celebrates elegance from the elements.



CONTENTS

04 ——— Infinite Blooms

08 ——— Bold Gold

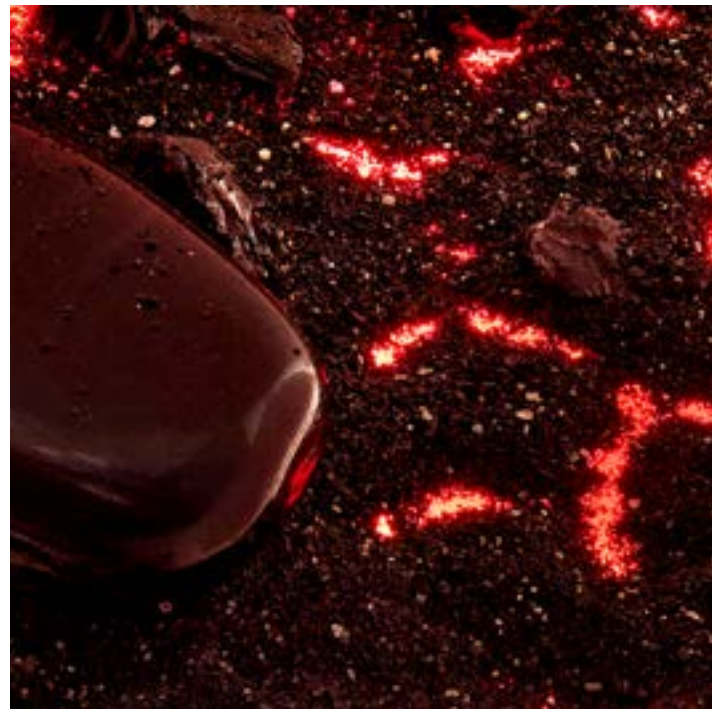
11 ——— Signature Splash

14 ——— Gentleman's Pick

16 ——— Rocking Layers

19 ——— Tiny Treasures

21 ——— Gilded '90s





Infinite Blooms

Make their floral fantasies come true with everlasting bling.







Bold Gold

Have them shine like 24-karat royalty in statement-makers that turn heads.









Signature Splash

Their shine, their way.

Uncover staples that let them
be the star of their own story.

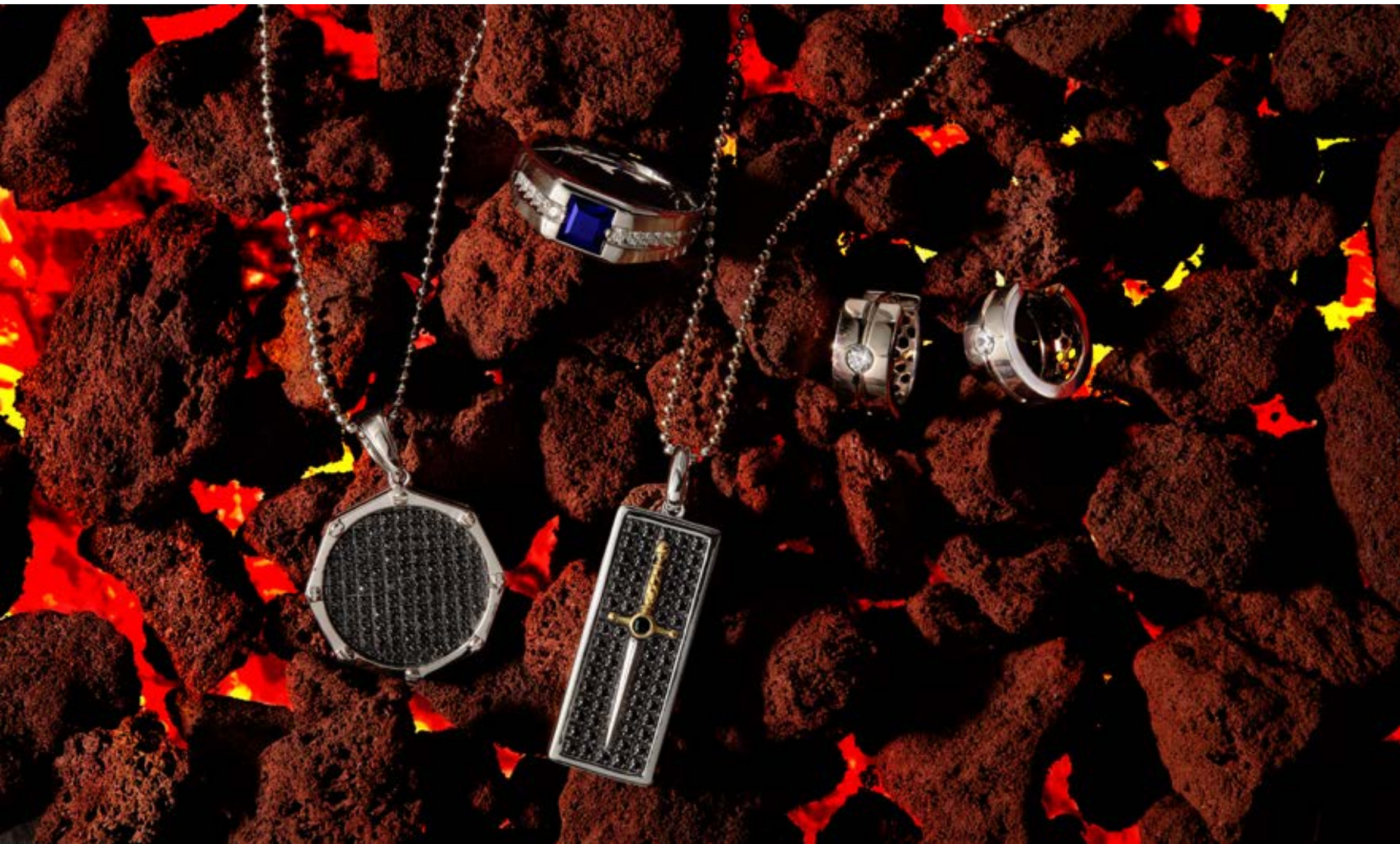






Gentleman's Pick

Help them dress to impress with our assortment of sleek and gender-neutral pieces.



Rocking Layers

How about one more... or *three*?
Tap into the trend everyone can't
seem to get enough of.







Tiny Treasures

Small wonders,
big impact. Discover
children's gems that
hold a world of charm.





A collection of gold jewelry is artfully arranged on dark, textured rocks. The pieces include a long, thin gold chain necklace, a shorter gold chain necklace with a heart-shaped clasp, a wide gold ring with a textured, fluted band, and a wide, polished gold ring with a smooth, reflective surface. The lighting is dramatic, highlighting the metallic sheen of the gold against the dark, rugged background.

Gilded '90s

Hit repeat on looks that pay
homage to an iconic era.





An aerial photograph of a desert landscape. The central focus is a large, circular crater with a dark, shadowed interior. The surrounding terrain is a mix of smooth sand and cracked, textured earth. The lighting is warm, creating a golden-brown color palette.

RICHLINE JEWELRY
— A Berkshire Hathaway Company —